

# Fact Sheet

Second Quarter, 2023



## Sustainable US Value Equity Strategy

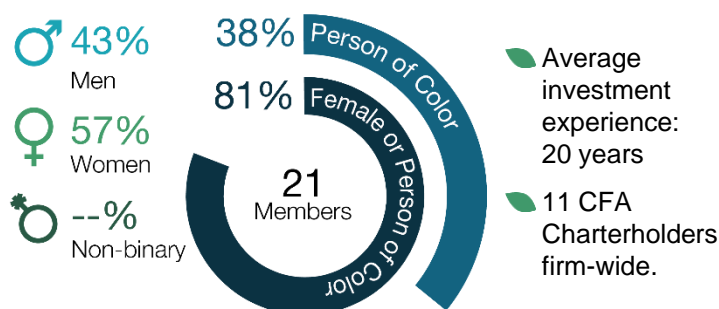
Boston Common's US Large Cap Value strategy invests in a diversified portfolio high-quality companies with sound governance and sustainable business models selling into growing end markets.

### Firm Overview

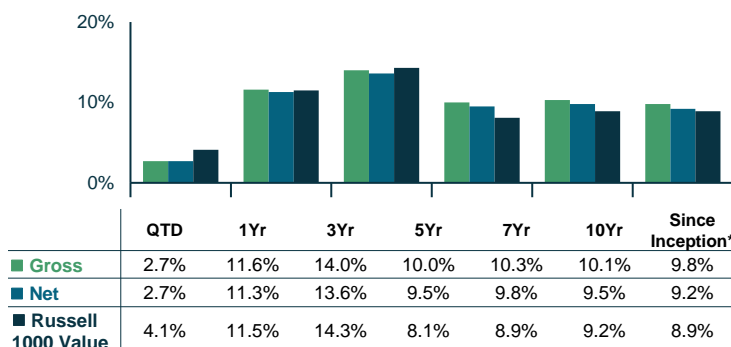
Boston Common Asset Management (BCAM) is an independent, women-led, and majority women- and employee-owned firm with a dual mandate to generate competitive returns and positive social & environmental impacts. An active, ESG-integrated, global equity investment manager and leader in shareowner engagement since 2003, BCAM challenges companies across industries to devote resources and innovation toward social equity and earth renewal. BCAM is headquartered in Boston. The company's investment strategies totaled \$5 billion in assets as of June 30, 2023.

### ESG-Integrated Investment Team

Boston Common's seasoned ESG-integrated Investment team seeks innovative companies offering attractive, risk-adjusted, long-term returns. The team uses an active shareowner engagement approach that targets improvements in corporate policies, processes, and products.



### Performance



### Annual Returns

	2023	2022	2021	2020	2019	2018	2017	2016	2015	2014
Gross	1.7%	-7.6%	24.3%	14.0%	29.0%	-8.8%	17.8%	13.0%	-1.6%	8.5%
Net	1.6%	-7.8%	23.7%	13.4%	28.3%	-9.3%	17.1%	12.3%	-2.3%	7.7%
Russell 1000	5.1%	-7.5%	25.2%	2.8%	26.5%	-8.3%	13.7%	17.3%	-3.8%	13.5%

### Strategy Details

Benchmark	Russell 1000 Value
Inception Date	December 31, 2002
Strategy Assets	\$690.4M
Holdings	50-70
Target Tracking Error	3-4%
Annual Turnover	20-30%
Time Horizon	3-5 years
Vehicles	Separate Accounts

### Portfolio Construction Team

**Geeta Aiyer, CFA**

- 35 years experience
- Strategy PM since 2002

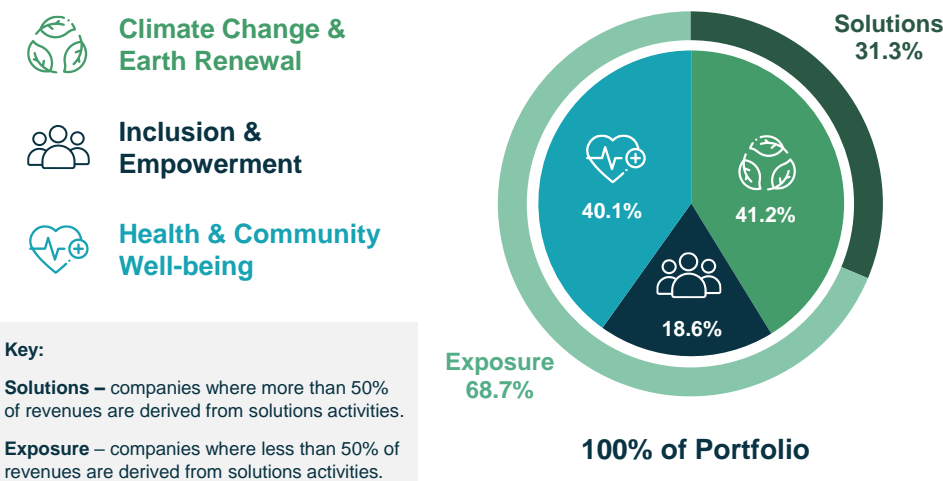
**Corné Biemans**

- 33 years experience
- With BCAM since 2012

**Praveen Abichandani, CFA**

- 31 years experience
- With BCAM since 2005

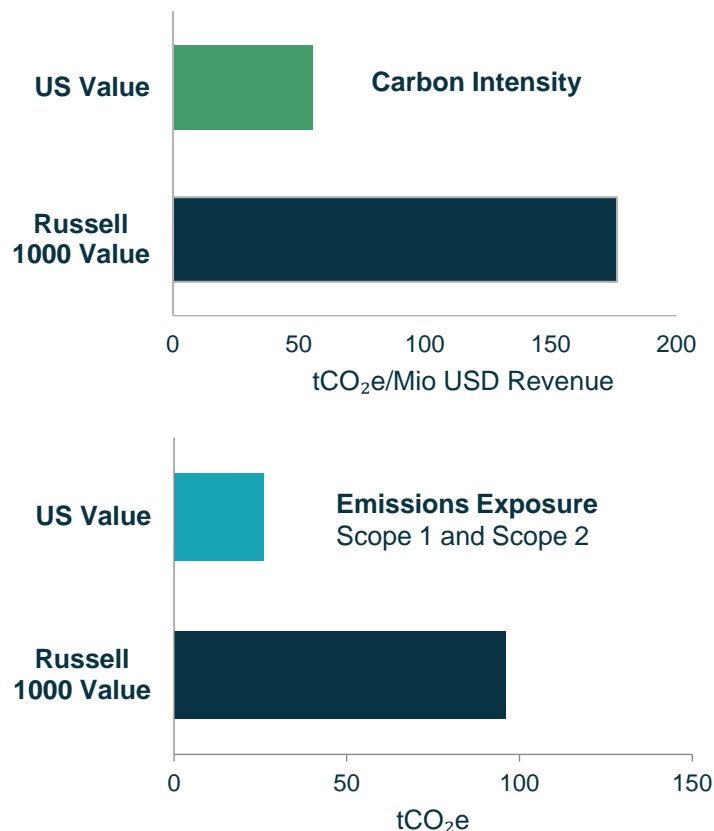
### Engagement Pillars Breakdown in Portfolio



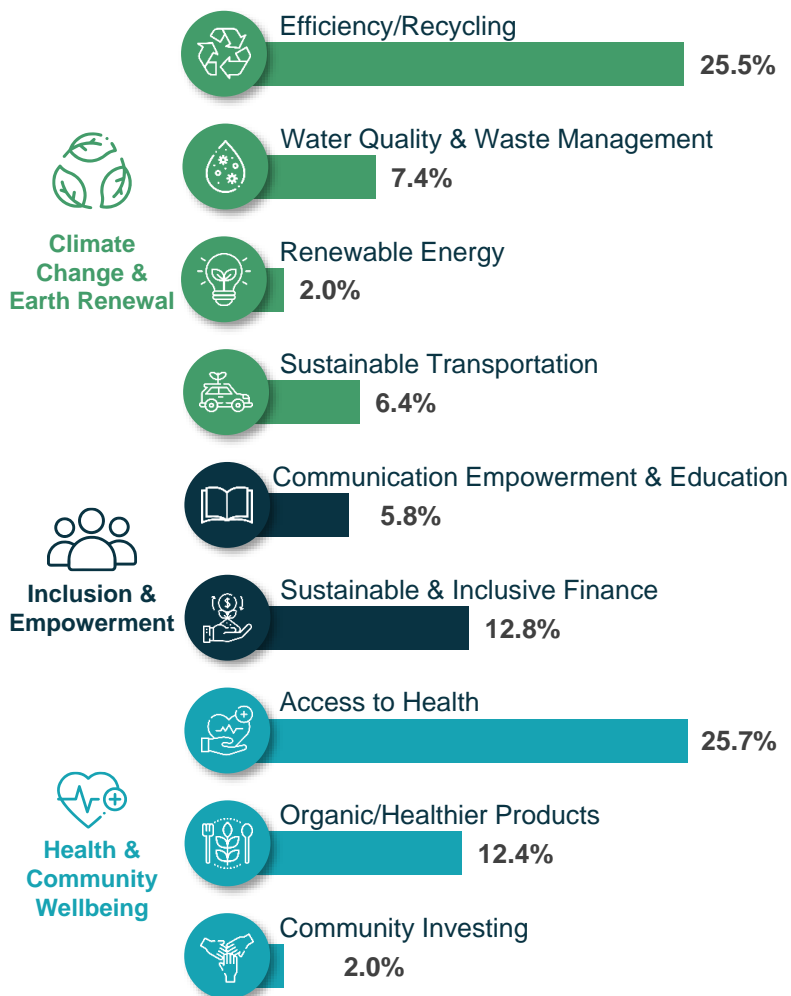
Source: APX Advent Portfolio Exchange. Past performance does not guarantee future results. All investments involve risk, including the risk of losing principal. \*Represents the absolute percentage of Class A employee owners, which account for 85% total ownership of the firm. Class B shares are held by a single, private outside entity and represent 15% ownership of the firm, as of 2/1/2021. Composite returns are presented in U.S. dollars, net of transaction costs, management fees and withholding taxes, with interest and dividends accrued. Returns for periods greater than one year are annualized.

## Portfolio Carbon Footprint<sup>1</sup>

Boston Common is a member of the Partnership for Carbon Accounting Financials (PCAF), a global, industry-led initiative to measure and disclose portfolio GHG emissions. All strategies are aligned within the range of a 1.5 – 2 degrees scenario analysis through 2050.



## Thematic Breakdown as % of Equity



## Sustainable Investment Strategies

	Equity Strategy	Benchmark	AUM	Inception Date	Vehicle Options
✓ Active management	<b>International*</b>	MSCI EAFE	2.0B	12/04	Separate Account, 3c-1 Fund, ADR, Mutual Fund
✓ Comprehensive ESG integration, analysis, & guidelines	<b>All Country International</b>	MSCI ACWixUS	520M	12/10	Separate Account, 3c-1 Fund, ADR, Mutual Fund**
✓ Active ownership & shareholder engagement	<b>Emerging Markets*</b>	MSCI EM	387M	12/12	Separate Account, 3c-1 Fund, Mutual Fund
	<b>US Value</b>	Russell 1000 Value	690M	12/02	Separate Account, Mutual Fund♦
	<b>US Core</b>	S&P 500	580M	12/02	Separate Account, Mutual Fund
	<b>Global Impact</b>	MSCI ACWI	719M	9/18	Separate Account, 3c-1 Fund, ADR, Mutual Fund**

As of 6/30/2023. All investments involve risk, including the risk of losing principal. \*Includes faith-based assets. \*\*Subadvised by Boston Common. ♦ Launching in 2023.

<sup>1</sup>Data Source: ISS ESG Climate Impact Assessment. \*ISS Climate Impact Assessment defines portfolio the carbon footprint using the position ownership ratio, which is the aggregated weight per position in the portfolio calculated by aggregated position value divided by the total analysis value. The resulting aggregated position value is then divided by the Market Cap or AEV (Adjusted Enterprise Value, defined as "total debt plus market capitalization). A portfolio's Carbon Intensity is achieved by calculating the carbon intensity (Scope 1 + 2 Emissions / \$M Sales) for each portfolio company and calculating the weighted average by portfolio weight. All data as of reporting date: June 30, 2023. ISS is an independent company owned by entities affiliated with Genstar Capital ("Genstar"). The information in this document should not be considered a recommendation to buy or sell any security. The Russell 1000 Value Index is a capitalization-weighted index of the 1000 largest publicly-traded US companies that have low price-to-book, price-to-earnings, and price-to-cash-flow valuations relative to a broader universe of companies. Indices are unmanaged and do not incur management fees, transaction costs, or other expenses associated with separately managed accounts. Boston Common claims compliance with Global Investment Performance Standards (GIPS®). For a full listing of Boston Common's composites and to request a GIPS® Compliant presentation, please call the Compliance Department. © 2020. May not be duplicated without the consent of Boston Common Asset Management, LLC; 200 State Street; 7<sup>th</sup> Floor; Boston, MA 02109



200 State Street, 7<sup>th</sup> Floor  
Boston, MA 02109

[www.bostoncommonasset.com](http://www.bostoncommonasset.com)  
[invest@bostoncommonasset.com](mailto:invest@bostoncommonasset.com)

Boston Common Asset Management | 2023